

# Zeramex XT Exocad

Workflow Zeramex Digital Solutions



**ZERAMEX**  
natürlich, weisse Implantate

[www.zeramex.com](http://www.zeramex.com)



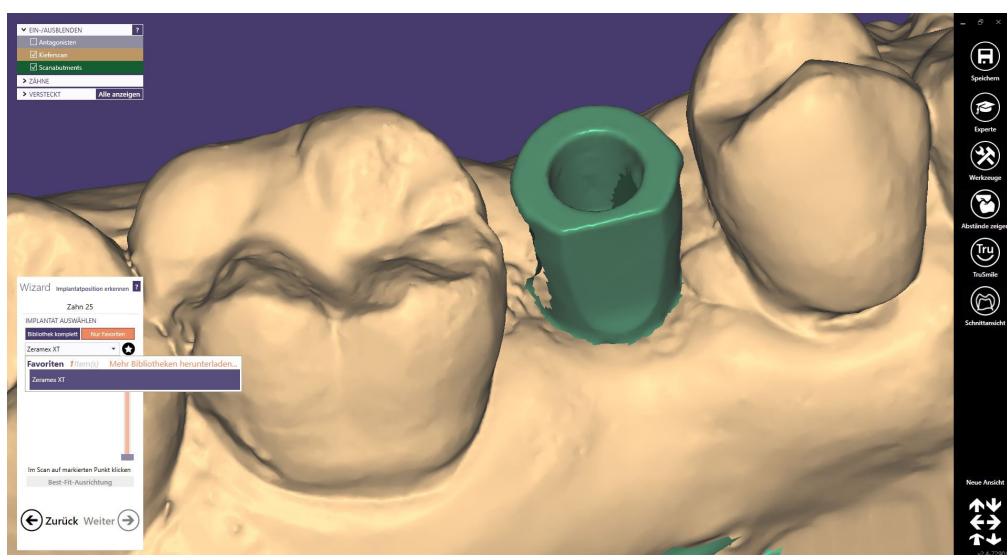
# Index

1. Zeramex Digital Solutions Workflow with exocad	3
1.1 ZDS Individual Abutment /individual crown (one-piece)	3
1.2 Where to find the file and what should you send	6
1.3 Individual Crown for Zerabase / Zerabase X	6
1.4 Further Information	8

# 1. Zeramex Digital Solutions Workflow with exocad

After installing the Zeramex XT exocad library on the system you will find the library in your DentalCAD App. For the installation please refer to the document „Zeramex XT implant library for exocad” on our webpage.

Load the scan data from the patient/case you want to design a suitable product.

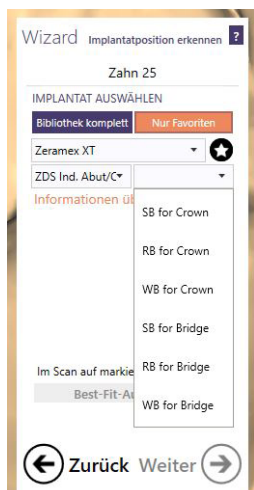


Add the library Zeramex XT as your Favorit to gain quicker access.

## 1.1 ZDS Individual Abutment / individual crown (one-piece)



Select the library ZDS Ind. Abut/Crown if you want to order a one-piece Abutment or one-piece Crown.

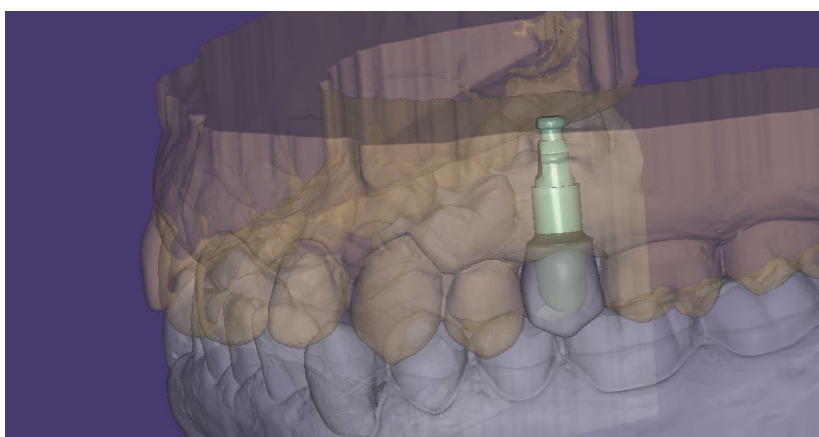
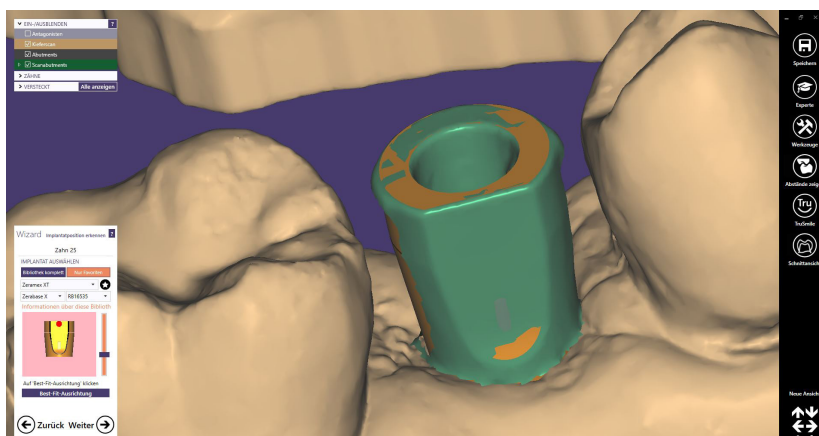


Select the correct design file according your desired article from the order form.

ZDS Article Number	Exocad file to select
SB15551 (Individual Abutment)	SB for Crown
RB16551 (Individual Abutment)	RB for Crown
WB17551 (Individual Abutment)	WB for Crown
SB15560 (Monolithic Crown)	SB for Crown
RB16560 (Monolithic Crown)	RB for Crown
WB17560 (Monolithic Crown)	WB for Crown

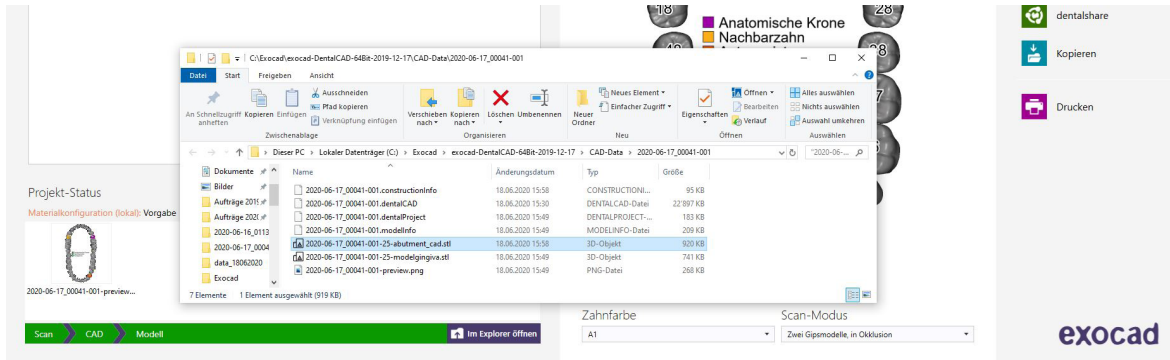
Design your product according your needs. For help please refer to the exocad manual or your official exocad vendor. *(Zeramex digital solutions is not in charge of designing your products.)*

Tip: In order to achieve better results it is recommended to adjust the scanbody high as seen in be lower left such as the Best-Fit alignment matches better to the scan data as seen in the example.



## 1.2 Where to find the file and what should you send

You will find the designed stl model file in your project folder.



If you want to order a 3D Modell or the upper or/and lower jaw (ZDS order number RB16570) you may have to send the prepared data from the model creator as well.

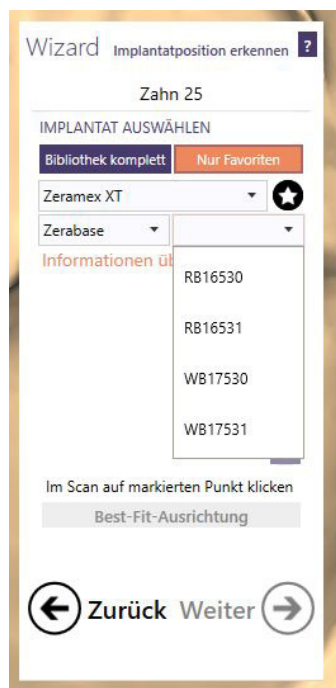
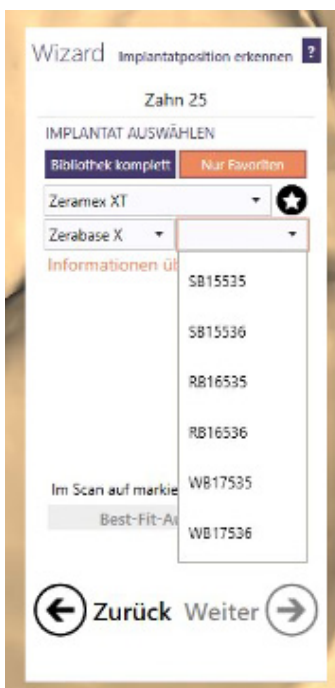
## 1.3 Individual Crown for Zerabase/ Zerabase X

If you want to order a crown or bridge for the Zerabase or the Zerabase X abutment, select the corresponding library.

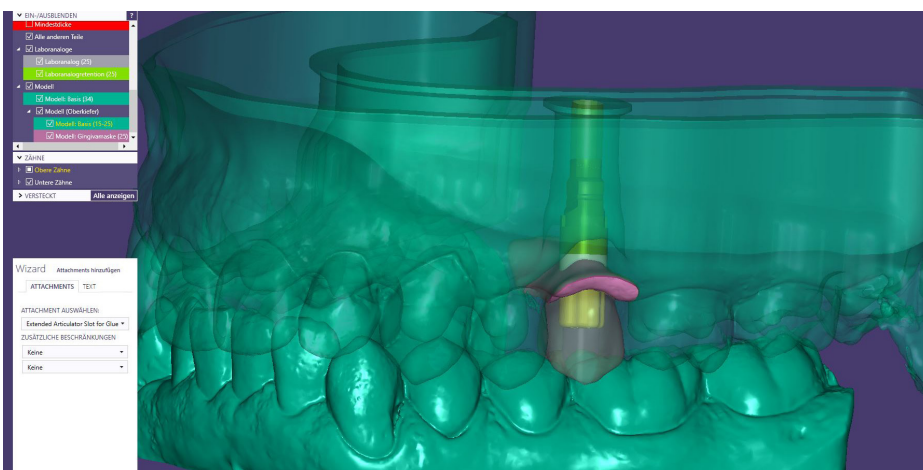
Select the correct design file according your desired article from the order form:

ZDS Article Number	Exocad file to select	Compatible Abutment
SB15552 or SB15553	Zerabase X – SB15535 (SB for Crown)	SB15535
	Zerabase X – SB15536 (SB for Bridge)	SB15536
RB16552 or RB16553	Zerabase X – RB16535 (RB for Crown)	RB16535
	Zerabase X – RB16536 (RB for Bridge)	RB16536
WB17552 or WB17553	Zerabase X – WB17535 (WB for Crown)	WB17535
	Zerabase X – WB17536 (WB for Bridge)	WB17536

ZDS Article Number	Exocad file to select	Compatible Abutment
RB16552 or RB16553	Zerabase – RB16530 (RB for Crown)	RB16530
	Zerabase – RB16531 (RB for Bridge)	RB16531
WB17552 or WB17553	Zerabase – WB17530 (WB for Crown)	WB17530
	Zerabase – WB17531 (WB for Bridge)	WB17531



Choose your desired base for the corresponding abutment and design your crown or bridge.





## **1.4 Further Information**

For further questions please refer to our frequently asked questions FAQ or our webpage. If still questions pop up or there are problems with the Zeramex Digital Solution workflow please contact the helpline under the number 00800 0400 1333.



